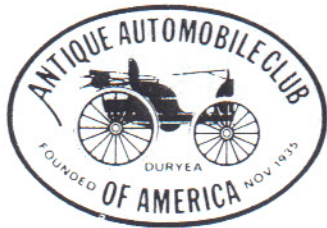


# The Scored Journal



## ALOHA REGION

Issue: 159

Oct-Nov-Dec  
2008



## FEATURE STORY 1949 Jeepster

The 1949 Willys Overland Jeepster was brought to the March 15, 2008 meet by invited guest, Fred Paine. Fred had to work the meet date, but kindly dropped the Jeepster for display. The meet was held at Victor Weisberger's house and garage.

At first glance the Jeepster appears to be a convertible. However, there are no roll up windows, making it closer to being a throw-back to a touring car.

The rear fenders have chrome step plates for climbing into the back seat, rumble seat style. The Jeepster is a real fun car with striking appearance. Today the Jeepster is a highly desirable collector car. See the August 2008 issue of Hemmings Motor News for an article on the Jeepster. A Jeepster is on the cover.

## ALOHA REGION OFFICERS

President:  
Fred Weisberger  
Phone: 254-0392

Vice-President:  
Harley Neff  
Phone: 261-5519

Treasurer:  
Glen Houlton  
Phone: 678-7266

Newsletter Editor:  
Victor Weisberger  
Phone: 262-7117

Newsletter printing:  
Member, Hank Gellert

## 1949 JEEPSTER continued

The companion car to the Jeepster was the Jeep Station Wagon. This body style sold in far greater numbers than the Jeepster. This was the first all steel station wagon and was painted to resemble wood. It was offered in either two or four wheel drive versions.

The chassis and front end sheet metal were shared with the Jeepster, a pickup truck, and panel delivery. None of the sheet metal body parts would fit the military Jeep version.

All vehicles in the series were at first powered by the famous military flat head Jeep Go-Devil engine with over drive coupled to a three speed transmission. On a level highway it would deliver an honest 30 miles per gallon. Later an optional six cylinder engine with intake valves in the head, and exhaust valves in the block was offered. All body styles in the series were designed by Brooks Stevens. Reprinted are specification sheets from an original brochure in the collection of your Editor.

## MODEL T FORD 100th ANNIVERSARY

In July the Model T Ford Club of America in conjunction with the Ford Motor Company held a week long anniversary meet in Richmond Indiana.

Nearly a thousand running model T Fords were in attendance, as well as more than 2,000 people. Members Victor and Fred Weisberger attended this great meet. Events included a parade, model T swap meet, car races and an antique airplane show at a nearby grass runway airport.

The Ford Motor Company exhibited the famous Ford 999 racer, a 1909 model T, and the first Blue Bird bus on a TT chassis, as well as futuristic Ford cars.

## MODEL T MEET continued

The small historic town of Richmond Indiana was alive with model T Fords running all over the streets all day long every day. It was like a return to the 1920's era of the model T Ford.

An illustrated commemorative binder on the event will be available for your study at the September 13 meet at Fred Weisberger's garage.

## MG ANNUAL MEET

The annual MG meet was held in Monterey California. Willie Williams, Victor & Fred Weisberger attended. Like the model T meet, MG's were seen running all over the town of Monterey. This is a beautiful seaside resort town. A mile long wide bikeway that is paved runs alongside the shoreline. Four wheel pedal cars as well as two wheel bikes are available for rent.

MG's in all body styles were present. Technical seminars were offered, a parade, and several banquets.

## REPORT ON AUGUST 16, 2008 MEET

This was a return meet to member Bob Kemble's garage to further work on Bob's 1932 Peerless to get it running again.

Members painted the split wheel rims in preparation for mounting new tires. Also, an attempt was made to remove the spark plugs to pour a small quantity of oil into each cylinder. Problems were encountered because the roof had leaked and the plugs were rusted in place.

## SCHEDULE OF MEETS

Saturday, September 13, 2008

Meet at Fred Weisberger's home and garage, 90 Aikahi Loop, Kailua HI. 96734. 10:00 A.M.

The club's 1907 model N Ford will be on display, as well as Fred's 1928 Hudson and two 1949 M.G.s Fred will host a picnic lunch.

(Note, the meet at Fred's place has been scheduled a week before the usual 3rd Saturday due to the Primary Election being the 3rd Saturday of Sept.)

Saturday, October 18, 2008

Meet at 10:00 A.M. Ranch 99 food court, 1151 Mapunapuna. This is a lunch and talk story meet. Bring an automotive item for show-and-tell.

Saturday, November 15, 2008

Meet at 10:00 A.M. at Richard Morgan's garage 2043 Alihilani Place, Honolulu, HI. Please drive to the meet in your antique car. Richard has parking for many cars in the driveway in his back yard facing his garage and shop. Richard's collection will be on display, Model T Ford touring, 1949 MG TC sports car, and Austin Healey sports car. All cars are running and licensed.

Richard will provide a picnic lunch.

Saturday, December 20, 2008

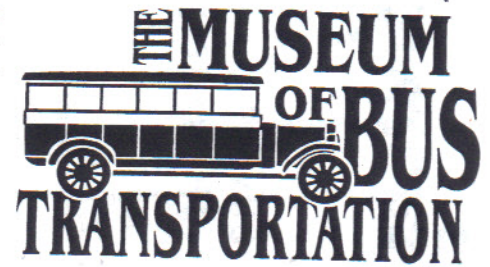
Dr. Robert Kemble's garage  
10:00 A.M.  
2063 Makiki Street  
Honolulu  
Project: Mount new tires  
and remove spark plugs

Saturday, January 17, 2009

Dr. Robert Kemble's garage  
10:00 A.M.  
2063 Makiki Street, Hon  
Project: Contine work  
on 1932 Peerless to ready it  
to run.

## The Bus Stop

I guess we are not unlike the little boy who looks under the Christmas tree, likes what he sees, but is looking for something he just did not get.



We have gathered nearly 30 buses, most of them ready to show at any time, but there is a bus which we, to date, have not been able to find – at least in any decent condition. That vehicle is a 35' intercity (over-the-road) bus known as model IC 37/41 and produced by ACF-Brill Motors of Philadelphia from late 1945 until March of 1950. Our records show that there were 1,319 of these famous buses built in the above time period – many of them produced for Trailways carriers but several Greyhound divisions also had them. In the "aftermarket" they showed up in small charter bus fleets all over the country providing several years of extended service.

What was neat, and unusual, about them is the fact that the front entrance door was behind the first window... this resulted in a set of seats right alongside the driver which were very popular in their day (not exactly always so with the driver who, sometimes, had unwanted company!!). The "Big Brills", as they were known were very sturdy units and provided passengers a smooth ride... however not very fuel efficient for their owners as 3 mpg would have been a stretch!

We recently were offered some assistance in locating one from Trans-Bridge Lines, Inc., the largest bus company in the Lehigh Valley area. They said they would recondition one if we could find it. They had six brand new ones in the 1940's and they were responsible for them retaining, even today, most of the college related charter work in the Lehigh Valley area. Currently, we have advertised in several trade journals for a "Big Brill" and have played up the fact that it would eventually be on display in the Museum.

We'll keep you posted... and, it's not too late to wish you a Happy New Year!

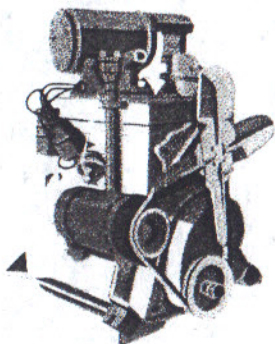
By Tom Collins  
President, The  
Museum of Bus  
Transportation



ACF-Brill's 'Big Brill'

*The Rumble Seat*

# Quality-Built for Long Service and Top Economy



**THE POWER HEART** of the "Jeep" Station Wagon is the war-tested Willys-Overland "Jeep" Engine, used in 500,000 fighting Jeeps—world-famous for stamina, performance and economy.

This mighty engine has been further improved in many ways and refined for even more brilliant performance and longer gasoline and oil mileage.

## SPECIFICATIONS OF THE 'JEEP' STATION WAGON

### GENERAL

Wheelbase.....104"  
Overall Length.....175"  
Curb Weight.....2925 lbs.  
Road Clearance.....8¼" (rear axle)

### ENGINE

HP.....63 HP @ 4000 RPM  
Torque.....105 # ft. @ 2000 RPM  
Displacement.....134.2 cu. in.  
Clutch.....8.5" dia., 72 sq. in. engagement area.

Compression Ratio (Standard) ... 6.48-1

(High Altitude Cylinder Head—7.0 to 1 ratio—with metering rod—optional at no extra cost when specified on order.)

REAR AXLE RATIO... 5.38:1

FRONT SUSPENSION... Independent

SPRINGS—front..... Transverse, semi-elliptic  
rear..... Conventional, semi-elliptic

TIRE SIZE..... 6.70x15, 4-ply super cushion.

BRAKES, SERVICE..... 133 sq. in.

OVERDRIVE..... Reduces engine revolutions 30%

**STANDARD EQUIPMENT ON THE 'JEEP' STATION WAGON, AT NO EXTRA COST, ARE THE FOLLOWING FEATURES:**

Ash Tray on dash	Arm Rests, front and rear seats
Two Ash Trays for passengers in rear	Rear View Mirror
Two Dome Lights, front and rear	Dual Windshield Wipers
Two Sun Visors	Safety Glass All Around
	Dual Horns

Vacuum Booster Type Fuel Pump

*Seventh Passenger Seat optional at extra cost*

Specifications Subject To Change Without Notice

**GO FARTHER ON**



**A GALLON OF GAS**



## OVERDRIVE FOR ADDED ECONOMY AND LONG ENGINE LIFE

Economy of operation is a "Jeep" Station Wagon feature. For *extra* economy in high-way driving, it is equipped with selective overdrive, which gives you longer gasoline and oil mileage and lengthens engine life.

At speeds over 30, you go into overdrive by merely lifting your foot momentarily from the accelerator. The engine slows down 30 per cent—but the car skims along with no reduction in road speed.

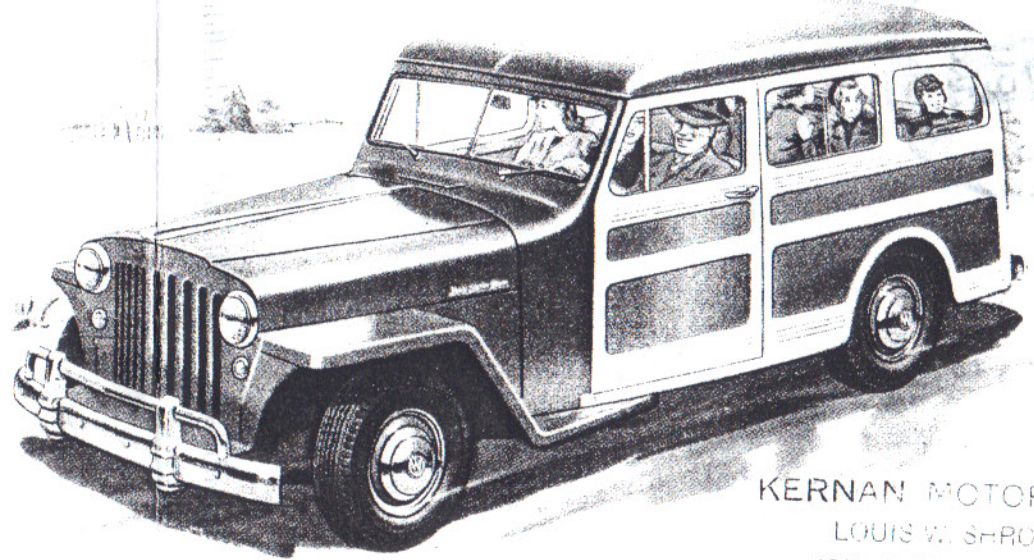
For example, when you are driving at 60, you let up on the accelerator and go into overdrive. The car keeps on doing 60, but the engine now turns at the rate it does when you travel at 42 miles per hour in direct drive.

To return to direct drive for faster acceleration or extra power—as in passing or climbing steep grades—just press the accelerator all the way to the floor.

**WILLYS-OVERLAND MOTORS, TOLEDO, OHIO**  
**MAKERS OF AMERICA'S MOST USEFUL VEHICLES**

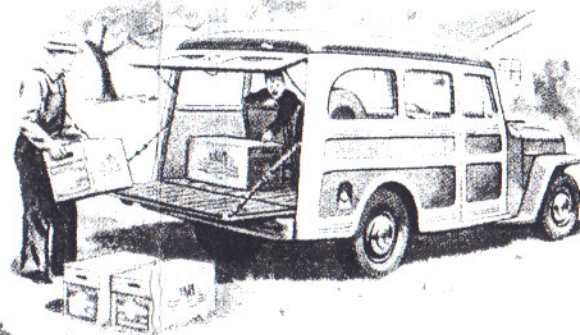
# The Car You Can Use for Almost Everything

**THE 'JEEP' STATION WAGON** is one of the most widely useful, practical cars ever made—a dual-purpose car that you can use for almost everything. It's a comfortable family passenger car—big and roomy... wonderfully smooth-riding. Extra large windows assure maximum visibility. With seats removed, it also serves as a utility vehicle with large load space for business and farm hauling. The "Jeep" Station Wagon is useful for odd jobs around home, and it's great for outings, camping trips and vacations.



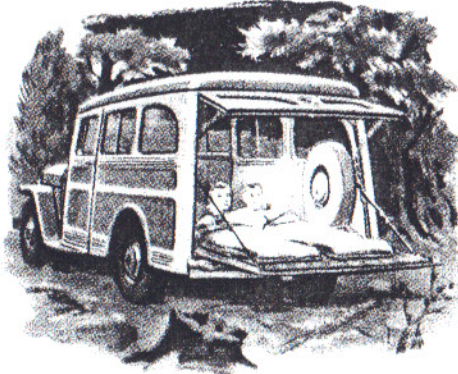
KERNAN MOTORS, INC.  
 LOUIS W. SHROYER  
 1217 MARYLAND AVE.  
 BALTIMORE 1, MD.  
 VERNON 2127

(Below) The versatile "Jeep" Station Wagon, with all-steel body and removable seats, is great for hunting, fishing and vacation trips. The roomy body and flat floor provide sleeping space for two adults.



(Below) Remove seats on picnic and camping trips for extra comfort. You will find the 'Jeep' Station Wagon an ideal all-around pleasure vehicle.

(Above) With seats removed, the "Jeep" Station Wagon has 98 cubic feet of usable cargo space, and even bulkier loads can be carried with the tailgate down. Steel floor, grained panels and seats are easy to wash.



(Above) Even with passenger seats in, there is large carrying space at the rear of the "Jeep" Station Wagon. It is the practical, useful car for the farmer, the craftsman—for every family. It is quality-built throughout to give years of low-cost service.



# The Scored Journal

Aloha Region  
Antique Automobile Club of America

162 Kaha Street  
Kailua, Hawaii 96734



FIRST CLASS MAIL